

2024

girl scouts
western pennsylvania

Camp S'more



Save 10%
when you register
by Feb. 29 or 5%
March 1-31.





Welcome, Campers!

We are thrilled to welcome you—and for many, welcome you back—to another season of summer camp! Get ready to unplug, unwind, and immerse yourself in the great outdoors with your fellow Girl Scout sisters.

Whether you're new to camping or have cherished it for years, our camps have something for every level of readiness, allowing you to develop important life skills in a safe, supportive environment. In this publication, you'll find age-appropriate sessions and learn more about what all four of our Girl Scouts Western Pennsylvania camps have to offer.

From devouring s'mores to singing songs around the campfire, we can't wait for you to experience the magic of camp. Pack your bags and get ready to step outside your comfort zone as you learn new skills, build friendships, and create memories that will last you a lifetime.

Your summer adventure awaits, Girl Scout!



Why Choose Girl Scout Camp

Girl Scout camp is a beloved tradition that helps girls develop important life skills and allows them to feel comfortable being truly, totally themselves.

According to girls who attended Girl Scouts Western Pennsylvania camps in 2023, they agreed or strongly agreed about the following experiences at camp:

- 93% of girls felt they had the power to make decisions for themselves
- 80% of girls felt they learned more about the world around them
- 80% of girls felt they made new friends
- 75% of girls felt they were courageous

Because we're committed to a safe, nurturing environment for children, all our camp properties are accredited by the American Camp Association (ACA). This means our camp operations meet the ACA standards, particularly those related to program quality and the health and safety of campers and staff.





Payment for Camp

Registration, Payments, and Discounts

Camp registration opens Jan. 24. To register online, visit gswpa.org/activities and search for the camp session name that interests your girl.

A \$25-\$100 deposit for camp (depending on the type of camp) is due at the time of registration. Full payment is due by May 15, 2024.

Early-bird registration discounts:

- Receive 10% off the total cost of camp when you register by Feb. 29, 2024.
- Receive 5% off the total cost of camp when you register March 1-31, 2024.

Girl Scout Bucks double for camp!

Girl Scout Bucks are earned through our council's MagNut program and the Girl Scout Cookie Program and can be doubled when used toward council-sponsored summer camps.

Financial assistance for camp

Financial assistance is available to girls to cover one council-sponsored camp per membership year. If you'd like to request financial assistance for camp, first save your girl's spot at camp by registering for the session she'd like to attend, then complete the Financial Assistance Form found at gswpa.org/forms.

Tiered Pricing

We believe that every camper, regardless of financial circumstances, should have the opportunity to experience camp. While the cost to maintain and operate camp continues to rise, we understand that families have differing abilities to meet summer camp costs. Because of this, we're offering a three-tiered pricing model.

Price selection is completely confidential and in no way affects the quality of the camp experience. Each household makes this decision, and additional financial documents will not be required.

When you register for a camp session, you will be asked to select the tier that best fits your family's financial situation.

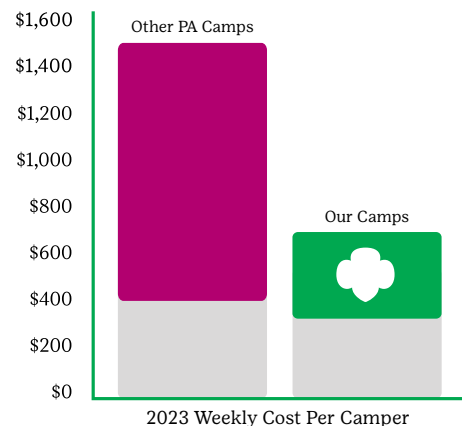
Tier One (T1)	The standard fee that all our members are asked to pay. Girl Scouts Western Pennsylvania subsidizes the remainder of the cost through other revenue sources, donations, and grants.
Tier Two (T2)	Our partially subsidized cost for families that can pay a little more, but not the actual cost of camp.
Tier Three (T3)	While this option does not cover the cost of camp entirely, it does help us pay for program supplies, staffing, food, and maintenance.

Camp registration opens Jan. 24!

We're here to help!

We're always available at customer@care@gswpa.org or by calling 800-248-3355. For additional camp details, including registration deadlines, camp procedures, health and safety, and check-in and check-out times, scan this code or visit gswpa.org/camp.

Girl Scout camp is available at a cost that's affordable to girls in western Pennsylvania.

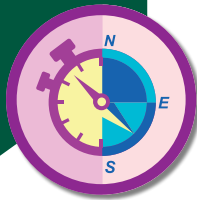


Source: Girl Scouts Western Pennsylvania's annual private and non-profit Pennsylvania camp registration cost analysis





Girl Scout Overnight Camp: A Day in the Life



A day at overnight camp is a balance of following a schedule and letting girls lead their day. Here's an example of a day at camp. *All activities and times are subject to change. If a specified activity is canceled, we will provide a comparable activity.*

7:00 a.m.	wake up
7:45 a.m.	flag ceremony & breakfast
9:00 a.m.	songs and kapers
9:30 a.m.	morning activities (such as climbing, archery, or a craft)
11:00 a.m.	session-specific activities
12:30 p.m.	lunch
1:30 p.m.	me-time
2:30 p.m.	afternoon activities (such as hiking, swimming, etc.)
4:00 p.m.	badge work
5:45 p.m.	flag ceremony and dinner
7:00 p.m.	evening all-camp activity or campfire
9:00 p.m.	showers & settling in
10:00 p.m.	lights out



Badges

Horseback riding? Protecting the environment? Exploring the night sky? Yep—there's a badge for that.

All campers receive a 2024 camp patch and earn a badge based on their session. Earning badges is a great way to try a new skill or get better at one you love.

Here are just some of the badges you can earn:

- Adventure Camper
- Animal Helpers
- Camper
- Climbing Adventure
- Coaching
- Dancer
- Eco Camper
- First Aid
- Girl Scout Way
- Horseback Riding
- Making Friends
- New Cuisines
- Outdoor Adventure
- Outdoor Art
- Simple Meals
- Space Science Investigator
- Trees
- Ultimate Recreation Challenge



Want to learn more about Girl Scout badges? Visit our Badge Explorer by scanning this QR code or visiting girlscouts.org/badgeexplorer.

Your Stay at Camp

Camp Lodging

Our camps offer a variety of accommodations allowing campers to be close to nature while still enjoying some of the comforts of home.



Platform Tents

Found at all camps, these canvas tents sit on raised, wooden platforms and include cots that can comfortably sleep up to four girls. The tents are non-heated and do not have electricity or bathrooms, but restrooms are located nearby.



Yurts

Found at Camp Redwing, yurts are large, enclosed, rounded shelters. These unheated, semi-permanent tent structures have several bunk beds inside. Our yurts have indoor lighting but no electric outlets or bathrooms. Restrooms are located nearby.



Rustic Cabins

Found at Camp Conshatawba and Camp Hawthorne Ridge, our rustic cabins are small, wooden buildings with bunk beds inside. These are non-heated and do not have electricity or bathrooms, but restrooms are located nearby.



Lodges

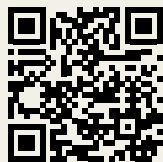
Found at all camps, lodges and non-rustic cabins vary, but are typically heated with several bunk beds or mattresses inside. Most have indoor or adjacent restrooms, plumbing, and electricity. Lodges and cabins without indoor restrooms have restrooms located nearby.



Property Rentals

Host your next troop meeting, family gathering, or community event at one of our camps!

Available for both members and non-members, our camp properties have year-round rental opportunities.



Looking for more outdoor fun?

Activity and equipment rentals such as archery and canoeing are also available! Learn more about our property rentals by scanning this code or visiting gswpa.org/reserveacamp.



NEW! Self-guided historical tour at Camp Redwing
Book your reservation at Camp Redwing to take a self-guided historical tour—new this year in honor of Camp Redwing's 100th anniversary!



2024 Camp Calendar



Week 1—June 16-22


Bustling Brownie Mini Week
Grades 2-3
June 16-19 (Sun.-Wed.)

 **My Bestie and Me Mini Week**
Grades 2-12
June 16-19 (Sun.-Wed.)

Tranquil Trails Mini Week
Grades 4-8
June 16-19 (Sun.-Wed.)

Bake Away
Grades 2-5
June 17-21 (Mon.-Fri.)

Crafty Camper
Grades 2-5
June 17-21 (Mon.-Fri.)

 **Pony Pals**
Grades 2-12
June 16-21 (Sun.-Fri.)

Culinary Cadettes
Grades 6-8
June 16-21 (Sun.-Fri.)

Counselor-in-Training I
Grades 9-12
June 16-21 (Sun.-Fri.)

Wrangler-in-Training I
Grades 9-12
June 16-21 (Sun.-Fri.)

Troop Camp Weekend at Camp Skymeadow
Grades 1-12, adults
June 21-23 (Fri.-Sun.)



Girl Scouts can bring their friends (members or non-members) to experience camp together.

Week 2—June 23-29

Big Night Sky
Grades 2-5
June 23-28 (Sun.-Fri.)

Made in Johnstown
Grades 4-12
June 23-28 (Sun.-Fri.)

Culinary Cadettes
Grades 6-8
June 23-28 (Sun.-Fri.)

Counselor-in-Training I
Grades 9-12
June 23-30 (Sun.-Sun.)

Family Camp Weekend at Camp Conshatawba
Grades K-12 and families
June 28-30 (Fri.-Sun.)

Daisy and Brownie Adventure
Grades K-3
June 24-28 (Mon.-Fri.)

Hawthorne Highlights
Grades 2-5
June 24-28 (Mon.-Fri.)

Wilderness Wanderers
Grades 2-5
June 24-28 (Mon.-Fri.)

Brownie Adventure Mini Week
Grades 2-3
June 25-28 (Tues.-Fri.)

Giddy Up Mini Week
Grades 2-3
June 25-28 (Tues.-Fri.)

Junior Camper Mini Week
Grades 4-5
June 25-28 (Tues.-Fri.)

Tree Traversal Mini Week
Grades 6-8
June 25-28 (Tues.-Fri.)

Trail Boss Mini Week
Grades 9-12
June 25-28 (Tues.-Fri.)

Week 3—June 30-July 6

 **We Love Camp Mini Week**
Grades 2-12
June 30-July 3 (Sun.-Wed.)

Junior Camper Mini Week
Grades 4-5
June 30-July 3 (Sun.-Wed.)

Daisy Days
Grades K-1
July 1-2 (Mon.-Tues.)

Daring Daisies
Grades K-1
June 30 (Sunday)

Camp Skymeadow Day Camp
Grades 2-12
July 1-3 (Mon.-Wed.)



Week 4—July 7-13

Counselor-in-Training II
Grades 9-12
July 7-19 (Sun.-Fri.)
12 nights

Spy Games
Grades 2-12
July 7-12 (Sun.-Fri.)

Art Aficionado
Grades 4-12
July 7-12 (Sun.-Fri.)

Troop Camp Weekend at Camp Conshatawba
Grades 1-12, adults
July 12-14 (Fri.-Sun.)

Counselor-in-Training I
Grades 9-12
July 7-14 (Sun.-Sun.)

Water Week
Grades 2-5
July 8-12 (Mon.-Fri.)

Footloose
Grades 2-5
July 8-12 (Mon.-Fri.)

Music Mania
Grades 2-5
July 8-12 (Mon.-Fri.)

Team Brownie
Grades 2-3
July 7-12 (Sun.-Fri.)

Horsin' Around
Grades 4-5
July 7-12 (Sun.-Fri.)

Cadette Crossing: New Adventure—Grades 6-8
July 7-12 (Sun.-Fri.)

Camp Skymeadow Amazing Race—Grades 6-8
July 7-12 (Sun.-Fri.)


Camp Skymeadow Champions
Grades 9-12
July 7-12 (Sun.-Fri.)


Girl Scouts Explore Western Pennsylvania
Grades 9-12
July 7-12 (Sun.-Fri.)

Family Camp Weekend at Camp Skymeadow
Grades K-12 and families
July 12-14 (Fri.-Sun.)

 Camp Conshatawba

 Camp Hawthorne Ridge (Day Camp)

 Camp Skymeadow

 Camp Redwing (Day Camp)



Week 5—July 14-20

Counselor-in-Training II
Grades 9-12
July 7-19 (Sun.-Fri.)
12 nights

Water Mini Week
Grades 2-12
July 16-19
(Tues.-Fri.)

Crafty Creations
Grades 2-5
July 15-19 (Mon.-Fri.)

Counselor-in-Training II
Grades 9-12
July 14-26 (Sun.-Fri.) 12 nights

Camp Chef
Grades 2-5
July 15-19
(Mon.-Fri.)

Camp Skymeadow
Celebration Mini Week
Grades 2-12
July 16-19
(Tues.-Fri.)

Counselor-in-Training II
Grades 9-12
July 14-26 (Sun.-Fri.) 12 nights

Wrangler-in-Training II
Grades 9-12
July 14-26 (Sun.-Fri.) 12 nights



Week 6—July 21-27

Ropes and Routes
Grades 6-10
July 21-26 (Sun.-Fri.)

Dynamic Drama Mini Week
Grades 2-12
July 21-27
(Sun.-Sat.)

My Girl Scout and Me
at Camp Conshatawba
Grades K-12 and families
July 26-28 (Fri.-Sun.)

Tranquil Trails
Grades 2-5
July 22-26 (Mon.-Fri.)

Daisy Days
Grades K-1
July 22-23 (Mon.-Tues.)

Summer Splash
Grades 2-5
July 22-26 (Mon.-Fri.)

Artistic Adventure
Grades 2-5
July 21-26 (Sun.-Fri.)

Summer Splash
Grades 2-5
July 21-26 (Sun.-Fri.)

Back in the Saddle
Grades 4-5
July 21-26 (Sun.-Fri.)

Art Aficionado
Grades 6-12
July 21-26 (Sun.-Fri.)

Cadette Crossing:
More Adventure—Grades 6-8
July 21-26 (Sun.-Fri.)

My Girl Scout and Me
at Camp Skymeadow
Grades K-12 and families
July 26-28 (Fri.-Sun.)

Week 7—July 28-Aug. 3

Hammock Hangout
Grades 4-12
July 28-Aug. 2 (Sun.-Fri.)

My Bestie and Me
Grades 4-12
July 28-Aug. 2
(Sun.-Fri.)

Culinary Cadettes 2
Grades 6-8
July 28-Aug. 2 (Sun.-Fri.)

Giddy Up Mini Week
Grades 2-3
July 30-Aug. 2 (Tues.-Fri.)

Brownies to the Rescue
Mini Week—Grades 2-3
July 30-Aug. 2 (Tues.-Fri.)

Juniors Save the Day
Mini Week—Grades 4-5
July 30-Aug. 2 (Tues.-Fri.)

Babysitter Club Mini Week
Grades 6-12
July 30-Aug. 2 (Tues.-Fri.)



Week 8—Aug. 4-10

Brownies and Treats
Mini Week—Grades 2-3
Aug. 4-7 (Sun.-Wed.)

In-Tents Mini Week
Grades 4-12
Aug. 4-7 (Sun.-Wed.)

Moonlight Madness Mini Week
Grades 4-12
Aug. 4-7 (Sun.-Wed.)

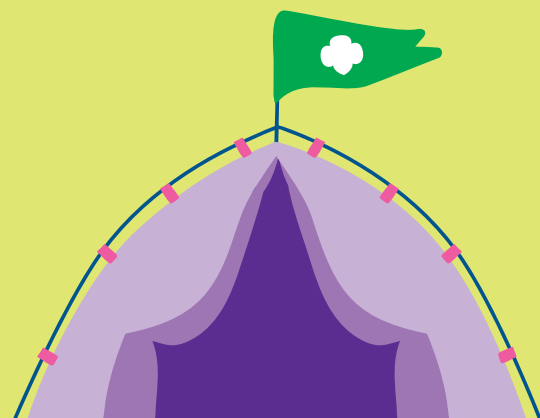
Ultimate Backpacker
Mini Week—Grades 9-12
Aug. 4-7 (Sun.-Wed.)

Pony Pals
Grades 2-12
Aug. 4-9 (Sun.-Fri.)

Junior Camp Skymeadow
Bake-Off—Grades 4-5
Aug. 4-9 (Sun.-Fri.)

Cadette Camp Skymeadow
Bake-Off—Grades 6-8
Aug. 4-9 (Sun.-Fri.)

Nama-Stay at Camp
Skymeadow—Grades 6-8
Aug. 4-9 (Sun.-Fri.)





Teen Leadership Camps



Take your leadership skills to the next level!

Our teen leadership camps are designed exclusively for older girls, providing hands-on training that can be applied to Girl Scouts and beyond.

Through program planning, team building, and project management, you'll gain the kind of experiences that fit nicely on a college application and resume. Our camp staff will provide feedback and guidance to help you continue to fine-tune your leadership skills.

Girls can begin their camp leadership experience as early as the summer before ninth grade.

Leave camp with more than you packed. Gain valuable skills and experience in:

Emotional support

Team leadership

Conflict resolution

Attention to detail

Facilitating activities

Communication

Project management

Public speaking

Mental health

Curriculum planning

Collaboration

Time management



Counselor-in-Training I (CIT I)

Gain usable experience and skills in leadership, teamwork, child development, and program planning. This session is filled with hands-on training to work with youth, as well as time for you to enjoy the fun of camp life. *CIT I is a prerequisite for CIT II.*

Entering Grades: 9-12 **Pin:** CIT

▲ **Camp Skymeadow:**

Week 1: June 16-21, Sun.-Fri. (5 nights) **\$350 \$400 \$450**

▲ **Camp Conshatawba:**

Week 2: June 23-30, Sun.-Sun. (7 nights) **\$350 \$400 \$450**

▲ **Camp Hawthorne Ridge:**

Week 4: July 7-14, Sun.-Sun. (7 nights) **\$350 \$400 \$450**

Counselor-in-Training II (CIT II)

Translate camp skills to real life, learn to build your resume, and work effectively on a team as you develop and deliver programs and set yourself up for future success as a counselor or in other youth development fields. Based on interests and strengths, you will work with a camper unit for even more experience. *Prerequisite: Completion of CIT I.*

Entering Grades: 9-12 **Pin:** CIT II

▲ **Camp Conshatawba:**

Week 4 and 5: July 7-19, Sun.-Fri. (12 nights) **\$400 \$450 \$500**

▲ **Camp Skymeadow:**

Week 5 and 6: July 14-26, Sun.-Fri. (12 nights) **\$400 \$450 \$500**

▲ **Camp Hawthorne Ridge:**

Week 5 and 6: July 14-26, Sun.-Fri. (12 nights) **\$400 \$450 \$500**

Wrangler-in-Training I (WIT I)

Take your horse knowledge to the next level as you shadow barn staff, help with barn and herd care, and share your horse knowledge with campers. Spend time riding and improving your skills and enjoying classic camp activities. *WIT I is a prerequisite for WIT II.*

Entering Grades: 9-12 **Pin:** CIT

▲ **Camp Skymeadow:**

Week 1: June 16-21, Sun.-Fri. (5 nights) **\$400 \$500 \$550**

Wrangler-in-Training II (WIT II)

Want to step up your wrangler training? Join the barn team and feel what it's like to be a horseback riding instructor at summer camp. Catch, lead, tie, and saddle horses for girls to ride. You'll spend time teaching girls, but don't worry—you'll have some time to ride and improve your riding skills, too. *Prerequisite: Completion of a WIT I program at a Girl Scouts Western Pennsylvania camp.*

Entering Grades: 9-12 **Pin:** CIT II

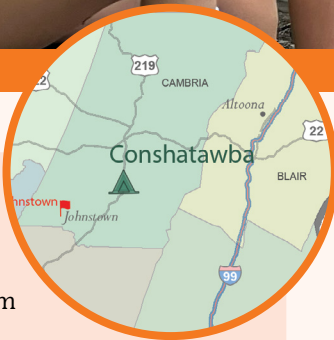
▲ **Camp Skymeadow:**

Week 5 and 6: July 14-26, Sun.-Fri. (12 nights) **\$400 \$450 \$500**





Camp Conshatawba



Meet Camp Conshatawba

Located 15 minutes from Johnstown and about 90 minutes east of Pittsburgh, Camp Conshatawba is nestled on 300 acres in the heart of the Allegheny Mountains.

As age, skill, and weather permit, campers at these sessions will join in the following traditional camp activities:

- Archery
- Arts & crafts
- Creek walking
- Hiking
- Rock climbing
- Swimming



All camp activities are subject to change. If a specified activity is canceled, we will provide a comparable activity.

Be sure to check out our **Leadership Camps** (pg. 8), **Troop Camps** (pg. 20), and **Family Camps** (pg. 21) happening at Camp Conshatawba too.



Travel Camps

Made in Johnstown*

Explore all things local! Check out all that Camp Conshatawba has to offer, including the climbing wall and zipline course. You'll also visit the Johnstown Flood Museum and local historical sites and end with a tubing trip down the river. **This session travels off-site.*

Entering Grades: 4-12 **Badge:** Camper

Week 2: June 23-28, Sun.-Fri. (5 nights) **\$460 \$510 \$585**

Art Aficionado*

Create a masterpiece with your friends at Camp Conshatawba this summer. Get creative with your unit, decide on an art project to work on together, and leave it at camp for all to enjoy. This session will include a day trip to explore Johnstown's murals and visit Southern Alleghenies Museum of Art. **This session travels off-site.*

Entering Grades: 4-12 **Badge:** Outdoor Art Apprentice/Outdoor Art Master/Outdoor Art Expert

Week 4: July 7-12, Sun.-Fri. (5 nights) **\$495 \$545 \$620**

Ropes and Routes*

Climb your way to the top of the climbing tower every day, learn advanced climbing techniques at the wall, soar through the tree canopy zipline course, and create climbing-inspired crafts. Then, put your skills to the test when you venture from camp for a day to a local challenge course. **This session travels off-site.*

Entering Grades: 6-10 **Badge:** Climbing Adventure

Week 6: July 21-26, Sun.-Fri. (5 nights) **\$495 \$545 \$620**





All girls receive a badge and patch at overnight and day camp.



Ultimate Backpacker Mini Week*

Put your backpacking skills to the test for this ultimate adventure on the trail. You'll prepare for the two-night experience by learning about budgeting meals, practicing carrying your pack around camp, and camping in a tent. From purifying water, prepping meals, and sleeping under the open sky—you'll build your skills and create lifelong friendships and memories. *Prerequisites: Must be able to hike 3-4 mile stretches and carry a 20-pound backpack. *This session travels off-site.*

Entering Grades: 9-12 **Badge:** Trail Adventure/Survival Camper
Week 8: Aug. 4-7, Sun.-Wed. (3 nights) **\$305 \$350 \$445**

We Love Camp Mini Week

Come experience camp life! Ever wanted to explore trails, climb rock walls, or zipline through the trees? Experience all the wonderful things our camp has to offer—arts & crafts, swimming, climbing, laughter, friendship, and memories for a lifetime. Girl Scouts can attend with their bestie (member or non-member). Both campers must register for the camp session.

Entering Grades: 2-12 **Badge:** Outdoor Adventurer/
Cadette Trail Adventure/Senior and Ambassador Camper
Week 3: June 30-July 3, Sun.-Wed. (3 nights) **\$270 \$320 \$395**

Junior Camper Mini Week

For the Junior Girl Scout who's ready for outdoor adventure, loves every part of camp, and must experience it all—welcome to the ultimate Junior camper experience where there are songs to be sung, friends to meet, and new things to try.

Entering Grades: 4-5 **Badge:** Camper
Week 3: June 30-July 3, Sun.-Wed. (3 nights) **\$270 \$320 \$395**
Week 5: July 16-19, Tues.-Fri. (3 nights) **\$270 \$320 \$395**

Water Mini Week

Do you love water activities? Gather with new friends as you experience all things water at camp—slip n' slides, water balloons, and enjoying lunch by the pool!

Entering Grades: 2-12 **Badge:** Camper
Week 5: July 16-19, Tues.-Fri. (3 nights) **\$270 \$320 \$395**

Brownies and Treats Mini Week

Think like a chef and whip up some delicious treats. Learn new recipes and work on the basics of creating easy and tasty snacks and small meals to satisfy your cravings.

Entering Grades: 2-3 **Badge:** Snacks
Week 8: Aug. 4-7, Sun.-Wed. (3 nights) **\$270 \$320 \$395**

In-Tents Mini Week

Backpack your way through Camp Conshatawba on the Shush Trail for a two-night adventure. Before you hit the trail, you'll learn navigation basics and how to pack and prepare for a backpacking trip, purify water, and cook camp meals. Then, you'll be ready to use your new skills while making lasting memories and friendships.

Entering Grades: 4-12 **Badge:** Camper
Week 8: Aug. 4-7, Sun.-Wed. (3 nights) **\$270 \$320 \$395**

Mini Week Camps

Bustling Brownie Mini Week

Let the outdoors inspire your creativity! Take in the colors, shapes, and ideas for things you want to create. Find out how you can make your own art outdoors and have fun doing it!

Entering Grades: 2-3 **Badge:** Outdoor Adventurer
Week 1: June 16-19, Sun.-Wed. (3 nights) **\$270 \$320 \$395**

My Bestie and Me Mini Week

Experience Camp Conshatawba with your bestie by your side—traditions, adventure, and being a sister to every Girl Scout. This multi-age session is for sisters, cousins, and friends to come together at camp and even share a living space with your bestie (member or non-member). Both campers must register for the camp session. *Accommodations can be made for up to four besties together.*

Entering Grades: 2-12 **Badge:** Camper
Week 1: June 16-19, Sun.-Wed. (3 nights) **\$270 \$320 \$395**

Tranquil Trails Mini Week

Experience a camp spa day complete with face masks, relaxing in the sun, and enjoying nature. Learn new techniques to find tranquility like reading, yoga, or hiking through camp with friends to find the perfect spot for a hangout in the new hammocks you'll receive to use during camp and take home. Of course, you will adventure your way through traditional camp activities, like swimming and archery!

Entering Grades: 4-8 **Badge:** Independence/Science of Happiness
Week 1: June 16-19, Sun.-Wed. (3 nights) **\$270 \$320 \$395**

Moonlight Madness Mini Week

Explore the moonlight madness of Camp Conshatawba as you stargaze, discover nocturnal animals, and sleep under the open sky. Your midnight bedtime means you're the last ones awake at camp, and you'll sleep in and have a late breakfast before you head out for your favorite camp activities.

Entering Grades: 4-12 **Badge:** Camper

Week 8: Aug. 4-7, Sun.-Wed. (3 nights) **\$270 \$320 \$395**

My Bestie and Me

Experience Camp Conshatawba with your bestie by your side—traditions, adventure, and being a sister to every Girl Scout. This multi-age session is for sisters, cousins, and friends to come together at camp and even share a living space with your bestie (member or non-member). Both campers must register for the camp session. *Accommodations can be made for up to four besties together.*

Entering Grades: 2-12 **Badge:** Camper

Week 7: July 28-Aug. 2, Sun.-Fri. (5 nights) **\$460 \$510 \$585**

Sessions for Multiple Grade Levels

Big Night Sky

Explore the dark skies at night as you learn astronomy basics, sleep under the stars, create art inspired by space and constellations, and experience stargazing like never before with telescopes. By day, turn your focus to the fresh air while hiking, practicing yoga, climbing, ziplining, and swimming. It's going to be an out-of-this-world week.

Entering Grades: 2-5 **Badge:** Space Science Adventurer/Space Science Investigator

Week 2: June 23-28, Sun.-Fri. (5 nights) **\$495 \$545 \$620**

Spy Games

Wear the many hats of a special agent—detective, scientist, psychologist, and enforcer of the law. It's your turn to put your spy skills to the ultimate test!

Entering Grades: 2-12 **Badge:** Outdoor Adventurer/Create and Innovate/Special Agent/Adventurer/Eco Advocate

Week 4: July 7-12, Sun.-Fri. (5 nights) **\$460 \$510 \$585**

Dynamic Drama

This is an exciting week of all things theater—perform, work on costumes, or maybe learn set design. This week, everyone will be working on honing in on their craft—acting, singing, and writing—all ending in a weekend performance for your families. Girl Scouts can attend with their bestie (member or non-member). Both campers must register for the camp session. Friends and family are invited for a performance on Saturday morning.

Entering Grades: 2-12 **Badge:** Dancer/Scribe/Screenwriter/Troupe Performer

Week 6: July 21-27, Sun.-Sat. (6 nights) **\$460 \$510 \$585**

Hammock Hangout

Hammock hop around camp during this Zen-inspired week. Experience a camp spa day complete with face masks, relaxing in the sun, and enjoying nature. Learn new techniques to find tranquility, like reading, yoga, or hiking through camp with friends to find the perfect spot for a hangout in the new hammocks you'll receive to use during camp and take home.

Entering Grades: 4-12 **Badge:** Camper/Trees/Adventurer/Trail Adventure

Week 7: July 28-Aug. 2, Sun.-Fri. (5 nights) **\$460 \$510 \$585**

Sessions for Girl Scout Cadettes

Culinary Cadettes

Spend the week sharpening your culinary skills for the Camp Conshatawba Cook-Off. From appetizers to delicious desserts, learn how to prepare all types of meals, then compete in a cooking competition between you and your Cadette unit mates.

Entering Grades: 6-8 **Badge:** New Cuisines

Week 2: June 23-28, Sun.-Fri. (5 nights) **\$495 \$545 \$620**

Culinary Cadettes 2

Focusing on outdoor cooking with *Leave No Trace* principles, you'll explore various cooking styles and meal types utilizing foil, one pot and box oven baking, and baking over an open campfire. Campers will be able to make their own cardboard box oven to take home. The grand finale of the week will be the opportunity to make a dish using the same surprise ingredient in an amazing cook-off. *Prerequisite is Culinary Cadettes.*

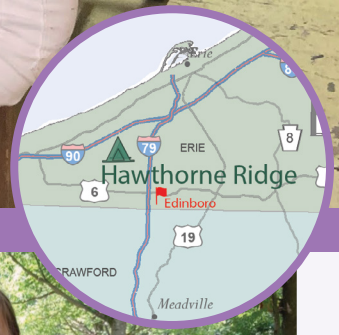
Entering Grades: 6-8 **Badge:** Eating for You


Week 7: July 28-Aug. 2, Sun.-Fri. (5 nights) **\$495 \$545 \$620**





Camp Hawthorne Ridge



 The first 45 girls to register for day camp at Camp Hawthorne Ridge will receive a discount thanks to a generous donation.



Meet Camp Hawthorne Ridge

About 25 minutes south of Erie and less than a two-hour drive from Pittsburgh, Camp Hawthorne Ridge boasts more than 200 beautiful, wooded acres with hiking trails that lead all over camp, including down into the Gorge.

As age, skill, and weather permit, campers at these sessions will join in the following traditional camp activities:

- Archery
- Arts & crafts
- Cooking
- Swimming
- Trekking to the Gorge or Brownie Gorge



All camp activities are subject to change. If a specified activity is canceled, we will provide a comparable activity.

Day Camps at Camp Hawthorne Ridge

You'll experience all the fun of camp, then head home for the evenings. Take a dip in the pool, shoot arrows at the archery range, and explore the scenic wooded areas by foot on trails or by water. Campers will earn a badge, as well as a fun patch. Please note: Lunch is not provided, so please bring a packed lunch each day.

Day Camps

Bake Away

Come bake some delicious treats with us at Camp Hawthorne Ridge! Learn to keep safety first while baking a new dessert each day. Make your very own recipe book complete with all the new recipes you learn throughout the week. On your last day at camp, you will make a special dessert to take home and enjoy with your whole family! There will also be plenty of time to enjoy your favorite traditional camp activities.

Entering Grades: 2-5 **Badge:** Girl Scout Way
Week 1: June 17-21, Mon.-Fri., 9 a.m.-4 p.m. **\$250 \$300 \$375**



NEW! Enjoy a beautiful hike on the Falls Run Gorge Trail when you visit Camp Hawthorne Ridge! All hikes must be guided by staff or approved volunteers.



Hawthorne Highlights

Welcome to Camp Hawthorne Ridge! Come enjoy all that camp has to offer while hiking the trails, geocaching, participating in low ropes, swimming, and more!

Entering Grades: 2-5 **Badge:** Making Friends/Social Butterfly
Week 2: June 24-28, Mon.-Fri., 9 a.m.-4 p.m. **\$250 \$300 \$375**

Daisy and Brownie Adventure

Calling all Girl Scout Daisies and Brownies! This week will be filled with lots of traditional activities, such as hiking, swimming, crafts, and more.

Entering Grades: K-3 **Badge:** Eco Learner/Eco Friend
Week 2: June 24-28, Mon.-Fri., 9 a.m.-4 p.m. **\$250 \$300 \$375**

Water Week

Come make a splash with us at Camp Hawthorne Ridge! Slip 'n slide around camp while spending extra time poolside, participating in fun water-themed games and activities, and enjoying all that camp has to offer.

Entering Grades: 2-5 **Badge:** Making Friends/Social Butterfly
Week 4: July 8-12, Mon.-Fri., 9 a.m.-4 p.m. **\$250 \$300 \$375**

Crafty Creations

Come get crafty at Camp Hawthorne Ridge! Explore your creative side in and outdoors. From painting and sculpting to jewelry making, discover your own unique artistic style while also enjoying your favorite traditional camp activities.

Entering Grades: 2-5 **Badge:** Outdoor Art Creator/
 Outdoor Art Explorer
Week 5: July 15-19, Mon.-Fri., 9 a.m.-4 p.m. **\$250 \$300 \$375**

Tranquil Trails

Experience a camp spa day complete with face masks, relaxing in the sun, and enjoying nature. Learn new techniques to find tranquility, like reading, yoga, outdoor painting, and hiking through camp.

Entering Grades: 2-5 **Badge:** Outdoor Adventurer/Trail Adventure
Week 6: July 22-26, Mon.-Fri., 9 a.m.-4 p.m. **\$250 \$300 \$375**

All girls receive a badge and patch at overnight and day camp.



Camp Skymeadow



Meet Camp Skymeadow

About a one-hour drive from both Pittsburgh and Johnstown, Camp Skymeadow sits on 371 acres of forested hills and serves as our council's horse program headquarters.



All campers will meet and ride the horses during each camp session at Camp Skymeadow. However, horse sessions will have daily, scheduled horse activities.

With miles of trails, girls will continue to be challenged as they progress through our riding levels. As age, skill, and weather permit, campers at these sessions will join in the following traditional camp activities:

- Archery
- Arts & crafts
- Making s'mores
- Swimming



All camp activities are subject to change. If a specified activity is canceled, we will provide a comparable activity.

Travel Camps

Art Aficionado*

Create a masterpiece with your friends at Camp Skymeadow this summer. Get creative with your unit, decide on an art project to work on together, and leave it at camp for all to enjoy. This session will include a day trip to paint pottery and visit an art museum.

**This session travels off-site.*

Entering Grades: 6-12 **Badge:** Outdoor Art Apprentice/Outdoor Art Master/Outdoor Art Expert

Week 6: July 21-26, Sun.-Fri. (5 nights) **\$495 \$545 \$620**

Girl Scouts Explore Western Pennsylvania*

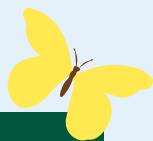
Experience all four of our council's Girl Scout camps in this one adventure-filled session! We'll visit each camp and participate in the awesome activities they have to offer. Riding horses at Camp Skymeadow, climbing at Camp Conshatawba, canoeing the Connoquenessing Creek at Camp Redwing, and exploring the Gorge at Camp Hawthorne Ridge—you'll get it all!

**This session travels off-site.*

Entering Grades: 9-12 **Badge:** Ultimate Recreation Challenge/ Adventurer

Week 4: July 7-12, Sun.-Fri. (5 nights) **\$495 \$545 \$620**





Mini Week Camps

Giddy Up Mini Week

Learn the ropes of horseback riding at this entry-level session. You'll spend a few hours each day at the barn learning the basics of how to ride a horse, and there will be time for other fun with the horses, like grooming and bathing them.

Entering Grades: 2-3 **Badge:** Pets

Week 2: June 25-28, Tues.-Fri. (3 nights) **\$350 \$400 \$470**

Week 7: July 30-Aug. 2, Tues.-Fri. (3 nights) **\$350 \$400 \$470**

Brownie Adventure Mini Week

Explore Camp Skymeadow and all the fun and friendship it holds as you spend time adventuring, hiking, singing, and crafting your way through camp. You'll practice foundational camping skills, make new friends, and discover the magic of summer camp with fellow Girl Scout Brownies.

Entering Grades: 2-3 **Badge:** Outdoor Adventurer

Week 2: June 25-28, Tues.-Fri. (3 nights) **\$270 \$320 \$395**

Junior Camper Mini Week

For the Junior Girl Scout who's ready for outdoor adventure, loves every part of camp, and must experience it all—welcome to the ultimate Junior camper experience where there are songs to be sung, friends to meet, and new things to try.

Entering Grades: 4-5 **Badge:** Camper

Week 2: June 25-28, Tues.-Fri. (3 nights) **\$270 \$320 \$395**

Tree Traversal Mini Week

Reach new heights with this week-long tree-climbing program. Learn all about trees, then get your footing as you scale Camp Skymeadow's largest oaks.

Entering Grades: 6-8 **Badge:** Trees

Week 2: June 25-28, Tues.-Fri. (3 nights) **\$270 \$320 \$395**

Trail Boss Mini Week

Explore even more of Camp Skymeadow while on horseback. Get a horse-eye view of the scenery with your unit after learning about the ins and outs of the barn and how to prepare yourself and your horse for the ride.

Entering Grades: 9-12 **Badge:** Voice for Animals/
Ultimate Recreation Challenge

Week 2: June 25-28, Tues.-Fri. (3 nights) **\$350 \$400 \$470**



Camp Skymeadow Celebration Mini Week

Welcome to Camp Skymeadow! This mini week is all about experiencing camp for Girl Scouts and their besties (members or non-members). Both campers must register for the camp session. We'll sing, ride, and paddle our way around Camp Skymeadow and learn what camp is all about. *Accommodations can be made for up to four besties together.*

Entering Grades: 2-12 **Badge:** Girl Scout Way

Week 5: July 16-19, Tues.-Fri. (3 nights) **\$270 \$320 \$395**

Brownies to the Rescue Mini Week

Learn the basics of first aid as you create and prepare your own first aid kit, practice how you can help during an emergency, and meet a professional who helps people when they're hurt.

Entering Grades: 2-3 **Badge:** First Aid

Week 7: July 30-Aug. 2, Tues.-Fri. (3 nights) **\$270 \$320 \$395**

Juniors Save the Day Mini Week

Discover who and how you can help during an emergency situation as you meet local first responders to hear about their careers and experiences in the field. You'll learn how to help others when they're sick or injured as you brush up on your first aid skills.

Entering Grades: 4-5 **Badge:** First Aid

Week 7: July 30-Aug. 2, Tues.-Fri. (3 nights) **\$270 \$320 \$395**

Babysitter Club Mini Week

Have you been thinking about starting your own babysitter business? Camp Skymeadow wants to help! Join us for this mini week to earn your American Red Cross Babysitter Certification and learn about promoting your very own babysitter business.

Entering Grades: 6-12 **Badge:** First Aid and American Red Cross
Babysitter Certification

Week 7: July 30-Aug. 2, Tues.-Fri. (3 nights) **\$285 \$335 \$410**



Day Programs

Daring Daisies

Today is all about Girl Scout Daisies! Experience what a day at camp is like and try a few Girl Scout-favorite camp activities. There will be time for visiting the horses, canoeing, and arts & crafts. Come along with your troop or make new friends at camp. *All campers must be accompanied by an adult or be with a group maintaining proper ratios.*

Entering Grades: K-1

Week 3: June 30, Sunday, 9 a.m.-4 p.m. **\$95**

Camp Skymeadow Day Camp

Spend a few beautiful summer days at Camp Skymeadow this week! We'll explore camp each day with a fun camp activity and learn about camp traditions too.

Entering Grades: 2-12

Week 3: July 1-3, Mon.-Wed., 9 a.m.-4 p.m. **\$110 \$170 \$240**

Sessions for Multiple Grade Levels

Pony Pals

Experience Camp Skymeadow with your bestie by your side (member or non-member)—canoeing, adventures on horseback, and being a sister to every Girl Scout. This multi-age horse session is for sisters, cousins, and friends to come together at camp. Both campers must register for the camp session. *Besties will share a living space and accommodations can be made for up to four besties together.*

Entering Grades: 2-12 **Badge:** Pets/Horseback Riding/Animal Helpers/Voice for Animals/Ulimate Recreation Challenge

Week 1: June 16-21, Sun.-Fri. (5 nights) **\$545 \$595 \$670**

Week 8: Aug. 4-9, Sun.-Fri. (5 nights) **\$545 \$595 \$670**

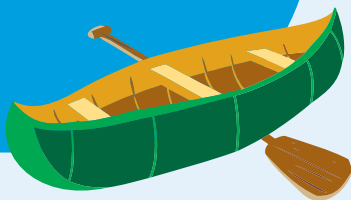
Artistic Adventure

Explore nature as you tap into your creativity and dive into the world of outdoor art. You'll create your next great masterpiece with plenty of time to enjoy your favorite activities around camp.

Entering Grades: 2-5 **Badge:** Outdoor Art Creator/
Outdoor Art Explorer

Week 6: July 21-26, Sun.-Fri. (5 nights) **\$460 \$510 \$585**

Be sure to check out our **Leadership Camps** (pg. 8), **Troop Camps** (pg. 20), and **Family Camps** (pg. 21) happening at Camp Skymeadow too!



Sessions for Girl Scout Brownies

Team Brownie

Learn new games, make new friends, and enjoy all Camp Skymeadow has to offer this week. We'll attend a field day afternoon and come up with our own rules for our favorite games, all while enjoying being part of a team.

Entering Grades: 2-3 **Badge:** Fair Play

Week 4: July 7-12, Sun.-Fri. (5 nights) **\$460 \$510 \$585**

Sessions for Girl Scout Juniors

Horsin' Around

It's time to hop in the saddle and try out horse camp. At this entry-level horse session, you will spend a few hours each day learning riding basics, how to care for horses, and the ins and outs of the barn.

Entering Grades: 4-5 **Badge:** Horseback Riding

Week 4: July 7-12, Sun.-Fri. (5 nights) **\$545 \$595 \$670**

Summer Splash

Make a splash at Camp Skymeadow as you jump into all things H2O. Take extra time to soak in the pool and discover new water sports at the pond. You won't even have to leave the poolside as you enjoy a lunch pool party.

Entering Grades: 2-5 **Badge:** Outdoor Adventurer/Camper

Week 6: July 21-26, Sun.-Fri. (5 nights) **\$460 \$510 \$585**

Back in the Saddle

Saddle up and get trotting! In this session, you'll learn even more about horse care and saddling your own horse. There's more than just fun in the barn to be had. All the great camp activities you know and love will be on the agenda too, like swimming, archery, and exploring nature.

Entering Grades: 4-5 **Badge:** Horseback Riding

Week 6: July 21-26, Sun.-Fri. (5 nights) **\$545 \$595 \$670**

Junior Camp Skymeadow Bake-Off

Junior bakers—it's your time to shine! This week we will learn about different types of baking skills, bake our own treats, and share our skills with others.

Entering Grades: 4-5 **Badge:** Simple Meals

Week 8: Aug. 4-9, Sun.-Fri. (5 nights) **\$460 \$510 \$585**

Sessions for Girl Scout Cadettes

Culinary Cadettes

Spend the week sharpening your culinary skills for the Camp Skymeadow Cook-Off. From appetizers to delicious desserts, learn how to prepare all types of meals, then compete in a cooking competition between you and your Cadette unit mates.

Entering Grades: 6-8 **Badge:** New Cuisines

Week 1: June 16-21, Sun.-Fri. (5 nights) **\$460 \$510 \$585**

Camp Skymeadow Amazing Race

Let's play! Calling all our game-loving Cadettes—we can't wait to plan, prep, and play this week at Camp Skymeadow. From amazing races and healthy competition to creating and being part of a field day for the entire camp, we're sure you're going to have a blast!

Entering Grades: 6-8 **Badge:** Field Day

Week 4: July 7-12, Sun.-Fri. (5 nights) **\$460 \$510 \$585**

Cadette Crossing: New Adventure

Hop in the saddle and try out horse camp. At this entry-level horse session, you will spend a few hours each day learning riding basics, how to care for horses, and the ins and outs of the barn. *Prerequisite: Camper must have experience steering a horse independently and be able to control at a walk.*

Entering Grades: 6-8 **Badge:** Animal Helpers

Week 4: July 7-12, Sun.-Fri. (5 nights) **\$545 \$595 \$670**

Cadette Crossing: More Adventure

Expand your horsemanship skills through more lessons and trail rides. Get hands-on experience caring for horses as you help out around the barn and get to know your horse on an even deeper level. *Prerequisite: Camper must have experience steering a horse independently and be able to control from a walk up to a canter.*

Entering Grades: 6-8 **Badge:** Animal Helpers

Week 6: July 21-26, Sun.-Fri. (5 nights) **\$545 \$595 \$670**

Nama-Stay at Camp Skymeadow

Make your world the happiest place it can be as you take time to relax and experience the calm around you at camp. Get creative with your unit mates as you practice new and different self care methods that support a healthy mind and body.

Entering Grades: 6-8 **Badge:** Science of Happiness

Week 8: Aug. 4-9, Sun.-Fri. (5 nights) **\$460 \$510 \$585**

Cadette Camp Skymeadow Bake-Off

Whisk your way through Camp Skymeadow this week with a whole lot of sweet treats. We'll bake famous desserts from other parts of the world and even create our own recipes. With some friendly competition, you're sure to leave with a bigger sweet tooth than you came with!

Entering Grades: 6-8 **Badge:** New Cuisines

Week 8: Aug. 4-9, Sun.-Fri. (5 nights) **\$460 \$510 \$585**

Sessions for Girl Scout Seniors and Ambassadors

Camp Skymeadow Champions

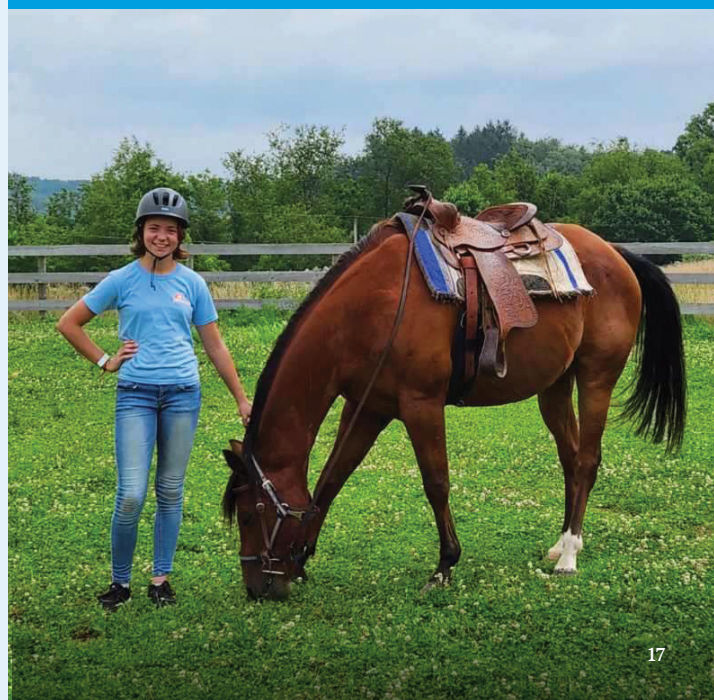
Design games of your own and develop your team and creativity skills in this fun-filled session. Don't worry—you'll still have time for the usual camp activities with horseback riding, arts & crafts, and time at the pool!

Entering Grades: 9-12 **Badge:** Game Visionary/Coaching

Week 4: July 7-12, Sun.-Fri. (5 nights) **\$460 \$510 \$585**



All girls receive a badge and patch at overnight and day camp.



Camp Redwing



Meet Camp Redwing

Just 15 minutes from downtown Butler and 45 minutes north of Pittsburgh, Camp Redwing spans 123 acres along the Connoquenessing Creek and has been providing amazing adventures for Girl Scouts in western Pennsylvania since 1923.

As age, skill, and weather permit, campers at these sessions will join in the following traditional camp activities:

- Arts & crafts
- Exploring the creek by foot or boat
- Hiking
- Playing on the splash pad
- Swimming



All camp activities are subject to change. If a specified activity is canceled, we will provide a comparable activity.



All girls receive a badge and patch at overnight and day camp!

Day Camps at Camp Redwing

You'll experience all the fun of camp, then head home for the evenings. Take a dip in the pool, shoot arrows at the archery range, and explore the scenic wooded areas by foot on trails or by water. Campers will earn a badge, as well as a fun patch. Please note: Lunch is not provided, so please bring a packed lunch each day.



Thanks to a generous donation from the Angel Sprite Memorial Fund, a discount is available for day camps at Camp Redwing while funds last.

Mini Day Camps for Girl Scout Daisies

Daisy Days

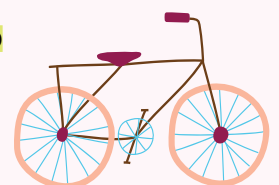
Calling all Girl Scout Daisies! Join us for a shortened week of day camps and learn the ropes of coming to camp! Enjoy arts & crafts, time on the splash pad, and even earn a badge!

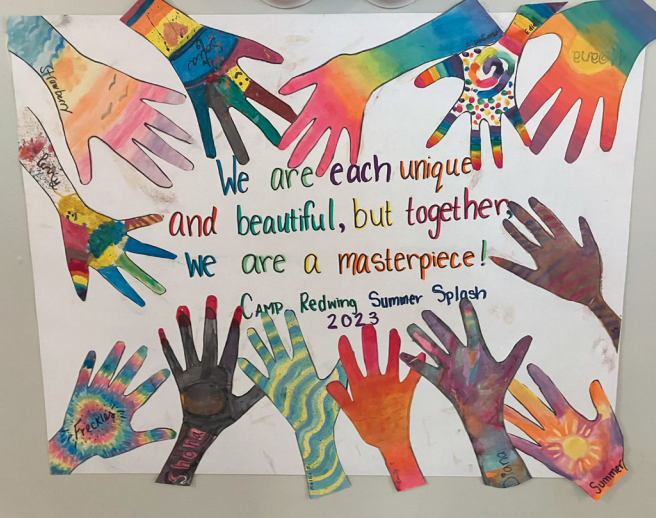
Entering Grades: K-1

Badge: Week 3, Eco Learner; Week 6, Design with Nature

Week 3: July 1-2, Mon.-Tues., 9 a.m.-4 p.m. **\$100**

Week 6: July 22-23, Mon.-Tues., 9 a.m.-4 p.m. **\$100**





Day Camps for Girl Scout Brownies and Juniors

Crafty Camper

This week at camp allows art and outdoor lovers to reach their max potential! Enjoy your time outside while you design your own crafts with nature, capture the beauty of camp on canvas, and find new ways to get inspired. Come explore all the creativity the outdoors has to offer!

Entering Grades: 2-5 **Badge:** Shapes in Nature

Week 1: June 17-21, Mon.-Fri., 9 a.m.-4 p.m. **\$250 \$300 \$375**

Wilderness Wanderers

Come connect with nature the best way we know how—by being a part of it! Wander into new experiences and explore the magic of the wilderness. Learn how to set up a tent, tend to a fire, protect nature, and enjoy a picnic outside!

Entering Grades: 2-5 **Badge:** Outdoor Adventurer/Camper

Week 2: June 24-28, Mon.-Fri., 9 a.m.-4 p.m. **\$250 \$300 \$375**

Add on: Interested in staying overnight at Camp Redwing? After day camp ends, you will stay at camp and enjoy an evening of fun. Dinner will be served, and if weather permits, girls will enjoy a fire with s'mores and have the option to sleep in tents for a true camping experience!

June 26-27, Wed.-Thurs. (1 night) **\$50**

Footloose

Swing on down to Camp Redwing and enjoy a groovy week. Learn new dance techniques, come up with your own dance routines, and perform your new moves at the amphitheater!

Entering Grades: 2-5 **Badge:** Dancer/Staying Fit

Week 4: July 8-12, Mon.-Fri., 9 a.m.-4 p.m. **\$250 \$300 \$375**

Music Mania

Find your harmony in nature at camp. Tune in to your musical abilities by listening to different genres of music, compose your own song, and perform your perfect pitch in a concert at the amphitheater!

Entering Grades: 2-5 **Badge:** My Great Day/Musician

Week 4: July 8-12, Mon.-Fri., 9 a.m.-4 p.m. **\$250 \$300 \$375**

Camp Chef

Think like a chef and whip up some delicious treats. Learn new recipes and work on the basics of creating easy and tasty snacks and small meals to satisfy your cravings.

Entering Grades: 2-5 **Badge:** Snacks/Simple Meals

Week 5: July 15-19, Mon.-Fri., 9 a.m.-4 p.m. **\$250 \$300 \$375**

Add on: Interested in staying overnight at Camp Redwing? After day camp ends, you will stay at camp and enjoy an evening of fun. If weather permits, girls will enjoy a meal cooked over the fire with s'mores and have the option to sleep in tents for a true camping experience!

July 17-18, Wed.-Thurs. (1 night) **\$50**

Summer Splash

End your summer with a splash! Beat the heat as we slip down the waterslide, dance on the splash pad, explore the creek, and enjoy many more aquatic activities together.

Entering Grades: 2-5 **Badge:** Girl Scout Way

Week 6: July 22-26, Mon.-Fri., 9 a.m.-4 p.m. **\$250 \$300 \$375**

Troop Camp



Whether you're new to camping as a troop or just looking for a pre-planned stay at camp, our troop camps are right for you! Let us take care of the details.

Girls attending troop camp must be accompanied by approved troop leaders/volunteers. Troop volunteer spots are limited, so please only register enough volunteers to meet required ratios, per our *Safety Activity Checkpoints*.



Troop Camp Weekend at Camp Conshatawba

Come together to experience some of Camp Conshatawba's traditional activities. Of course, there will be a campfire, s'mores, and camp traditions. Housing accommodations may be platform tents, rustic cabins, or lodges. More than one troop may be placed in the same housing unit. *Please note, archery and the climbing wall are limited to Brownie Girl Scouts and older.*

Entering Grades: 1-12, adults

Week 4: July 12-14, Fri.-Sun. (2 nights)

\$145 \$175 \$225

Troop Camp Weekend at Camp Skymeadow

Troop time is the best time! Come together at Camp Skymeadow to try your hand at archery, ride our horses, and enjoy s'mores under the stars! Housing accommodations may be platform tents or lodges, and more than one troop may be placed in the same housing unit.

Entering Grades: 1-12, adults

Week 1: June 21-23, Fri.-Sun. (2 nights)

\$165 \$195 \$245





Family Camp



Share the magic of Girl Scout camp with your caregiver or any significant adult in your life. Family camps don't require background checks or clearances for adults who attend.



All camp activities are subject to change. If a specified activity is canceled, we will provide a comparable activity.

Family Camp Weekend at Camp Conshatawba

Family time is the best time! Come together to experience some of Camp Conshatawba's traditional activities. Of course, there will be a campfire, s'mores, and camp traditions. Housing accommodations may be platform tents, rustic cabins, or lodges. More than one family may be placed in the same housing unit. *Please note, archery and the climbing wall are limited to Brownie Girl Scouts and older.*

Entering Grades: K-12 and families

Week 2: June 28-30, Fri.-Sun. (2 nights) **\$145 \$175 \$225**

My Girl Scout and Me at Camp Conshatawba

It's sure to be a special weekend when you bring your caregiver or best adult pal to camp with you. You'll be in for a weekend full of adventure when you participate in our traditional camp activities and have a *camp-tastic* time! Each Girl Scout and adult will be housed in a rustic cabin, platform tent, or lodge. *Please note, archery and the climbing wall are limited to Brownie Girl Scouts and older.*

Entering Grades: K-12 and families

Week 6: July 26-28, Fri.-Sun. **\$145 \$175 \$225**

Family Camp Weekend at Camp Skymeadow

Experience camp as a family as you saddle up for some time on horseback in the riding arena, then shoot archery, make crafts, and have a *camp-tastic* time! *Please note that while adults are allowed the opportunity to horseback ride, there is a weight limit of 250 pounds.*

Entering Grades: K-12 and families

Week 4: July 12-14, Fri.-Sun. (2 nights) **\$165 \$195 \$245**

My Girl Scout and Me at Camp Skymeadow

It's sure to be a special weekend when you bring your caregiver or best adult pal to camp with you. Saddle up for some time on horseback in the riding arena, then shoot archery, make crafts, and have a *camp-tastic* time! *Please note that while adults are allowed the opportunity to horseback ride, there is a weight limit of 250 pounds.*

Entering Grades: K-12 and families

Week 6: July 26-28, Fri.-Sun. (2 nights) **\$165 \$195 \$245**



Upcoming Events

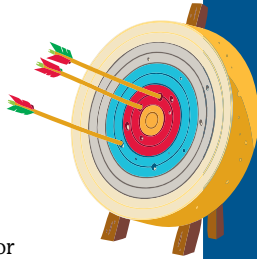
Woman Warriors

▲ **Camp Redwing:**

March 30, 2024

▲ **Camp Conshatawba**

April 6, 2024



Pick up your swords, shields, and bows and make your way to camp for a day of celebrating all types of women warriors who trailblazed their way through history. We have games and crafts to introduce you to women warriors of the past and present. Hone in on your own warrior skills with our outdoor activities. Fun patch is included.

Solar Party Weekend

April 6, 7, and 8, 2024

Visit Camp Hawthorne Ridge for an out-of-this-world experience! The weekend is comprised of four separate events that include space-themed activities from stargazing and space exploration to escape rooms and a solar eclipse viewing party. One event even includes staff and scientists from NASA! Camp Hawthorne Ridge is in the path of totality for the 2024 Solar Eclipse, so don't miss the fun of this rare experience!

Older Girl Summit

Aug. 8-11, 2024

Cadette, Senior, and Ambassador Girl Scouts will take over Ohiopyle and Camp Conshatawba! Girls can choose their own adventure, including rafting, painting, rock climbing, ziplining, archery, survival skills, and so much more. Girls can join Friday only, Saturday only, both days, or stay overnight at Camp Conshatawba.

Travel Opportunities

Our council has multiple travel opportunities available throughout the year. Choose from council travel with girls from Girl Scouts Western Pennsylvania, troop travel, or through Girl Scouts of the USA with Girl Scout Destinations or the Girl Scout alumni travel program. From regional day trips all the way to international trips, there are many opportunities to explore the world with fellow Girl Scouts. Learn more at gswpa.org/travel.



Save the Date

Girl Scout Day at PNC Park

Sunday, June 9

Join us at the ballpark to watch the Pittsburgh Pirates in action! This event includes discounted ticket prices at PNC Park for the whole family!



Journey-Palooza

Sept. 28 and 29, 2024

Girl Scouts will take a deep dive to earn their Journey Award and work on their Take Action Project while still leaving time for some classic camp adventures!



Girl Scout Day at the Pittsburgh Zoo & Aquarium

Sept. 15, 2024

This family event is always a wild time! Girl Scouts and their families can take advantage of discounted ticket prices and special activities just for Girl Scouts Western Pennsylvania.

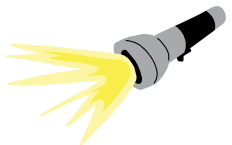
Camp Creepy

▲ **Camp Redwing:** Oct. 5, 2024

▲ **Camp Skymeadow:** Oct. 12, 2024

▲ **Camp Hawthorne Ridge:** Oct. 19, 2024

Full of family-friendly frights, these annual events have become our favorite way to celebrate fall. It will be a *spooktacular* time!





Getting Ready for Camp

Once you're signed up for camp, let the countdown begin!

To better prepare yourself for your summer adventure, take time to read your confirmation packets, get to know our staff, and stock up on camp gear!



Trading Post

New Cashless Trading Post

To provide smoother and safer service, overnight camp is going cashless.

When you register your girl for an overnight camp session, you can add a trading post deposit with each registration. The trading post will be open periodically during her stay at camp with a full line of merchandise! Money that is not spent during the week will be returned in the form of a gift certificate.

Virtual Camp Trading Post

You can also use our virtual Camp Trading Post to grab even more fun gear before heading to camp!



Camp Confirmation Packets

Camp confirmation packets for several different types of camp sessions are available in your member account under *My Events*, at gswpa.org/camp, or by scanning this QR code. They provide all the helpful information you need to prepare for your time at camp, such as preparation checklists, packing lists, needed forms, and procedures. Once registered, please read and review your confirmation packet in its entirety.



Meet the Staff

Our camp staff is always hard at work creating a summer full of exciting programming and unforgettable experiences for you. These are enthusiastic, talented, and caring individuals who have been carefully selected based on their maturity, program skills, experience, and their ability to serve as role models. They receive intensive pre-camp training each year to ensure a top-notch experience for all Girl Scouts.

If you want to learn how to thrive in the outdoors—and roast the perfect marshmallow—our team has got you covered.



Want to learn more about our camp staff?

Check out our staff bios by scanning this QR code.



girl scouts 
western pennsylvania

503 Martindale Street
Suite 500
Pittsburgh, PA 15212

Non-Profit
U.S. Postage
PAID
Permit No. 370
Pittsburgh, PA



Work at camp for a summer you'll never forget!

Choose from a number of exciting positions, such as:

- Activity Specialist
- Assistant Camp Director
- Barn Aide
- Canoe Instructor
- Day Camp Counselor
- Health Supervisor
- Horseback Riding Director
- Horseback Riding Instructor
- Junior Counselor
- Kitchen Manager
- Lifeguard
- Marketing
- Program Director
- Unit Counselor
- Unit Leader



For Girl Scout summer camp employment applications,
visit gswpa.org/employment or call 800-248-3355.